

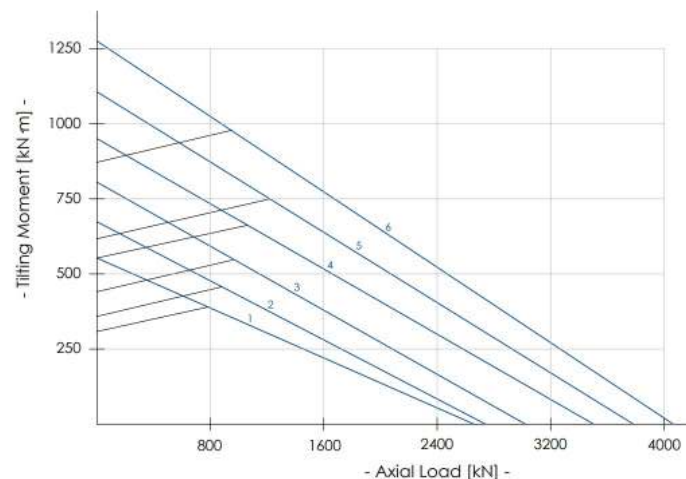
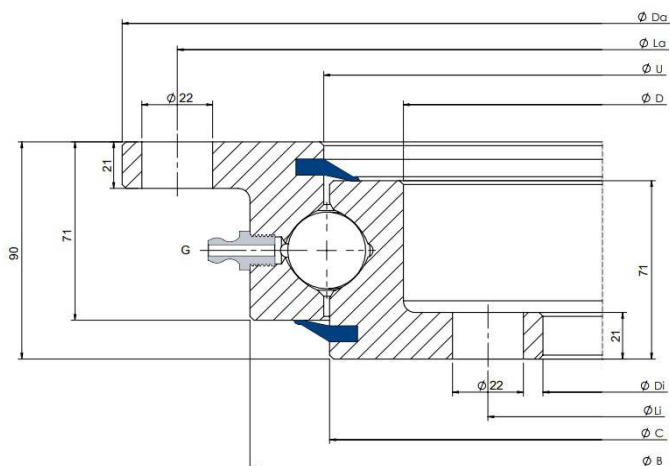
---

# MODEL WITHOUT GEAR



# SD 32.00.C

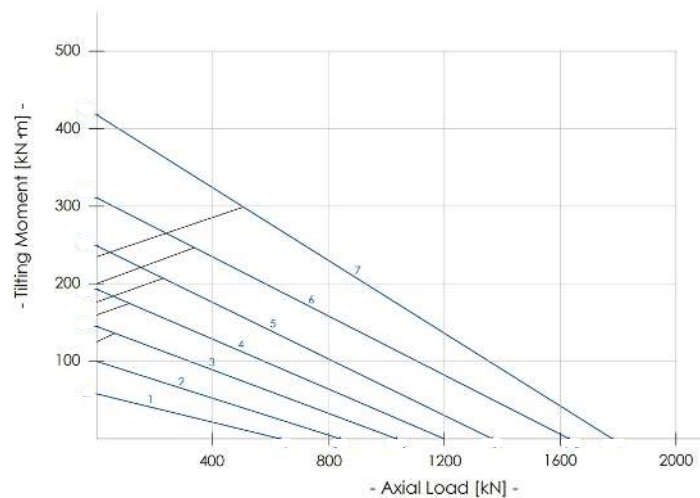
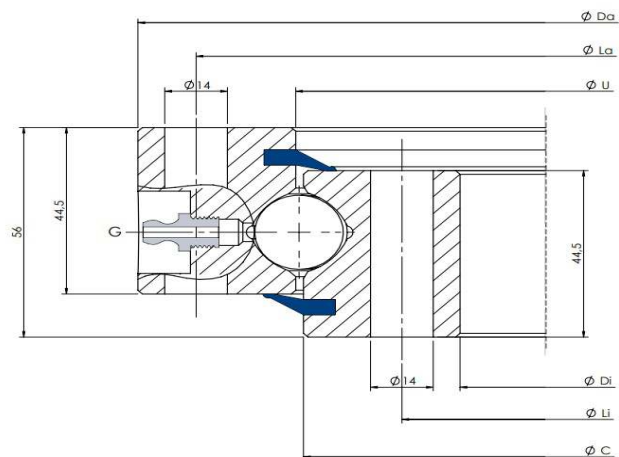
Light version, ball Ø32mm, ungeared, standard holes



Slewing Ring Type	Dimensions						Fixing holes				Static		Dynamic		Mass
	Da mm	B mm	U mm	C mm	D mm	Di mm	La mm	na n°	Li mm	ni n°	Coa (kN)	Mr (kN-m)	Ca (kN)	Cr (kN)	Weight kg
<b>1</b> SD.1100.32.00.C	1100	1017	955	955	893	805	1060	30	845	30	2660	553	538	349	131
<b>2</b> SD.1200.32.00.C	1200	1117	1055	1055	993	905	1160	30	945	30	2941	674	557	362	145
<b>3</b> SD.1300.32.00.C	1300	1217	1155	1155	1093	1005	1260	36	1045	36	3222	806	576	374	159
<b>4</b> SD.1400.32.00.C	1400	1317	1255	1255	1193	1105	1360	42	1145	42	3503	951	593	385	172
<b>5</b> SD.1500.32.00.C	1500	1417	1355	1355	1293	1205	1460	42	1245	42	3784	1107	610	396	186
<b>6</b> SD.1600.32.00.C	1600	1517	1455	1455	1393	1305	1560	48	1345	48	4065	1276	626	406	200

# SD 20.00.B

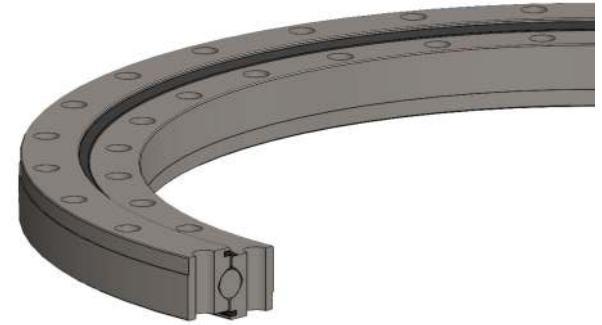
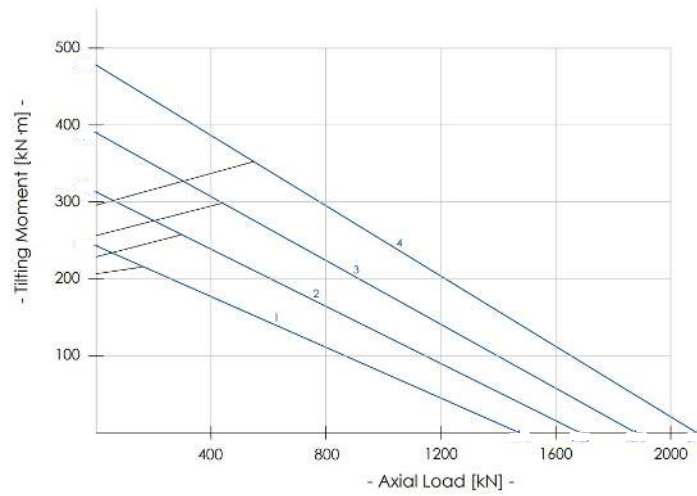
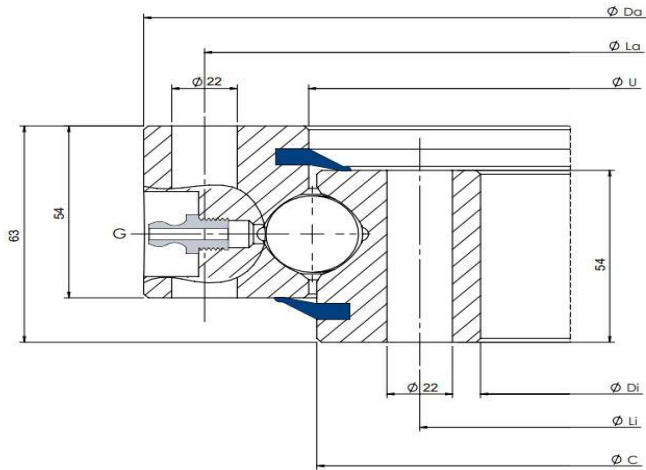
Standard version, ball Ø20mm, ungeared, standard holes



Slewing Ring Type	Dimensions				Fixing holes				Static		Dynamic		Mass	
	Da mm	U mm	C mm	Di mm	La mm	na n°	Li mm	ni n°	Coa (kN)	Mr (kN-m)	Ca (kN)	Cr (kN)	Weight kg	
<b>1</b>	<b>SD.486.20.00.B</b>	486	415.5	412.5	342	460	24	368	24	635	58	197	128	29
<b>2</b>	<b>SD.616.20.00.B</b>	616	545.5	542.5	472	590	32	498	32	841	100	219	142	37
<b>3</b>	<b>SD.716.20.00.B</b>	716	645.5	642.5	572	690	36	598	36	1035	145	233	151	44
<b>4</b>	<b>SD.816.20.00.B</b>	816	745.5	742.5	672	790	40	698	40	1201	193	246	160	52
<b>5</b>	<b>SD.916.20.00.B</b>	916	845.5	842.5	772	890	40	798	40	1366	249	258	167	60
<b>6</b>	<b>SD.1016.20.00.B</b>	1016	945.5	942.5	872	990	44	898	44	1632	311	269	174	67
<b>7</b>	<b>SD.1166.20.00.B</b>	1166	1096	1092.5	1022	1140	48	1048	48	1781	418	284	184	77

# SD 25.00.B

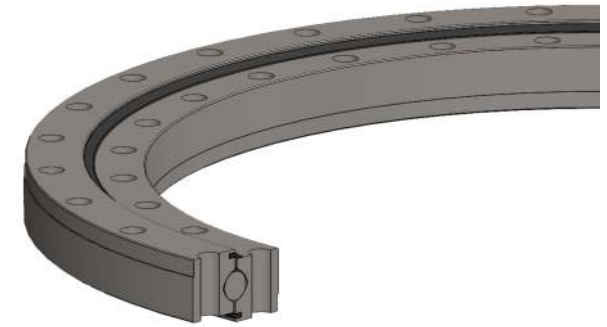
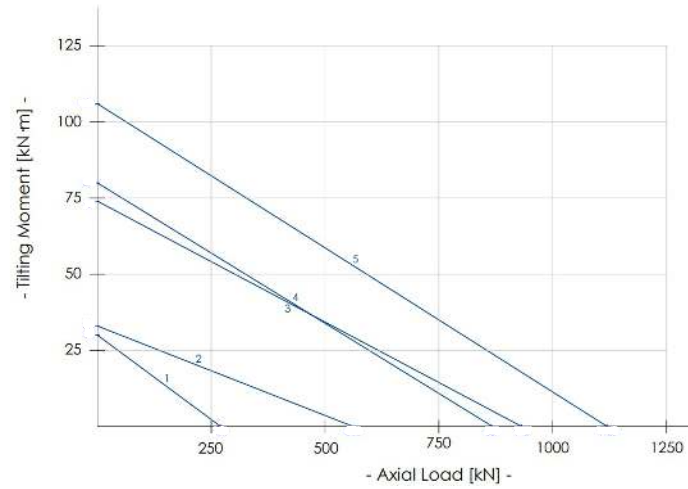
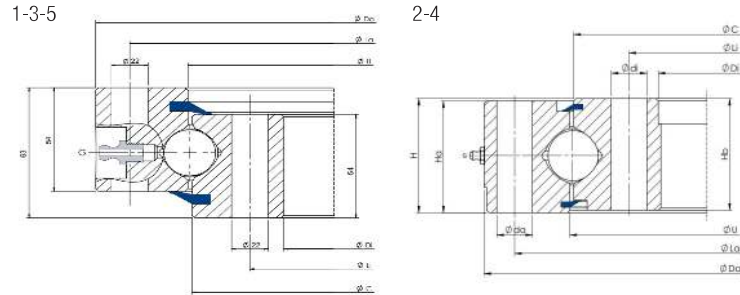
Standard version, ball Ø25mm, ungeared, standard holes



Slewing Ring Type	Dimensions					Fixing holes				Static		Dynamic		Mass
	Da mm	U mm	C mm	Di mm	La mm	na n°	Li mm	ni n°	Coa (kN)	Mr (kN·m)	Ca (kN)	Cr (kN)	Weight kg	
1 SD.855.25.00.B	853	756	756	657	815	24	695	24	1472	243	344	223	90	
2 SD.955.25.00.B	953	856	856	757	915	28	795	28	1683	313	362	235	101	
3 SD.1055.25.00.B	1053	956	956	857	1015	30	895	30	1878	390	376	244	115	
4 SD.1155.25.00.B	1153	1056	1056	957	1115	30	995	30	2090	478	391	254	128	

# SD XX.00.D

Special version, different ball  $\varnothing$  in mm, ungeared, special holes



Slewing Ring Type	Dimensions							Fixing holes					Mass		
	Da mm	U mm	C mm	Di mm	Ha mm	Hb mm	H mm	La mm	na n°	da mm	Li mm	ni n°	di mm	Weight kg	
<b>1</b>	<b>SD.234.14.00.D.1</b>	234	180.5	177.5	124.5	30	30	35	214	24-1	11	144.5	20	11	7
<b>2</b>	<b>SD.329.20.00.D.1</b>	327	262	258	192	44	44	45	305	16	14	215	16-1	14	18
<b>3</b>	<b>SD.430.25.15.D.1</b>	430	348	342	260	53	53	65	400	24	14	290	20	16	32
<b>4</b>	<b>SD.475.20.00.D.1</b>	474	404	403	336	44	44	45	450	24	14	360	24	14	30
<b>5</b>	<b>SD.505.25.15.D.1</b>	505	416.5	413.5	325	64.5	60	66	475	24	17	355	24	17	48