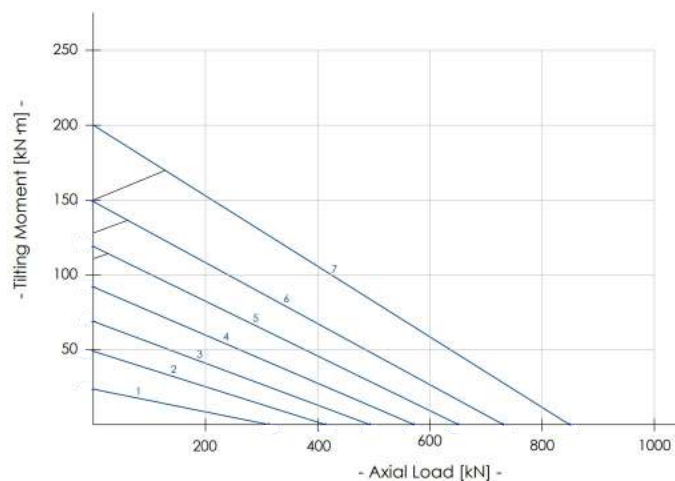
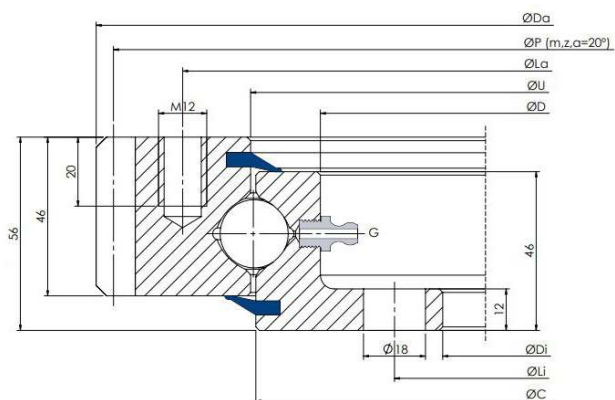


MODEL EXTERNAL GEAR

E 20.00.C

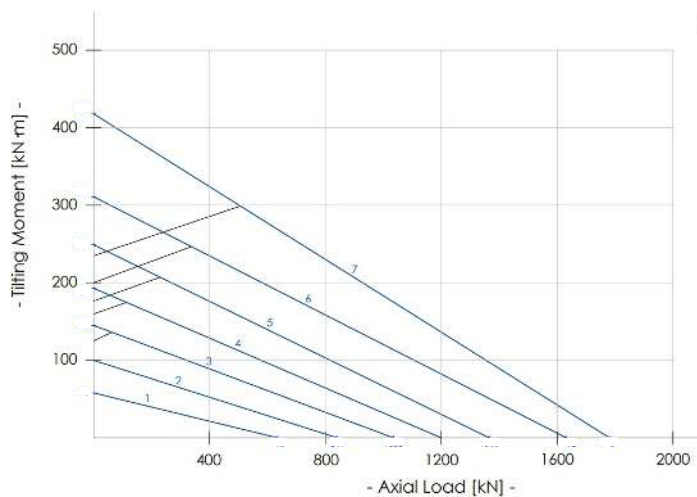
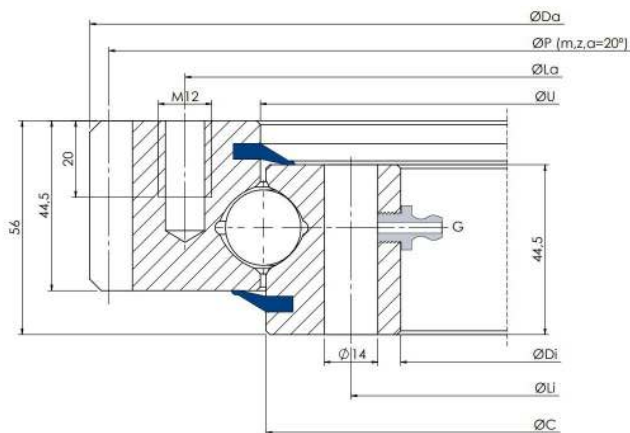
Light version, ball Ø20mm, external geared, standard holes



Slewing Ring Type	Dimensions					Fixing holes				Gear			Tooth Force		Static		Dynamic		Mass
	Da mm	U mm	C mm	D mm	Di mm	La mm	na n°	Li mm	ni n°	P mm	m	z n°	Fz nor. kN	Fz max. kN	Coa (kN)	Mr (kN·m)	Ca (kN)	Cr (kN)	Weight kg
1 E.505.20.00.C	504	415.5	412.5	375	304	455	10	332	12	495	5	99	17.8	24.9	313	29	197	128	29
2 E.650.20.00.C	640.8	545.5	542.5	505	434	585	14	462	14	630	6	105	21.2	29.7	414	49	218	142	40
3 E.750.20.00.C	742.8	645.5	642.5	605	534	685	16	562	16	732	6	122	21.2	29.7	493	69	233	151	47
4 E.850.20.00.C	838.8	745.5	742.5	705	634	785	18	662	16	828	6	138	21.2	29.7	572	92	246	160	53
5 E.950.20.00.C	950.4	845.5	842.5	805	734	885	18	762	18	936	8	117	28.3	39.6	651	119	258	167	64
6 E.1050.20.00.C	1046.4	945.5	942.5	905	834	985	20	862	20	1032	8	129	28.3	39.6	731	149	269	174	69
7 E.1200.20.00.C	1198.4	1095.5	1092.5	1055	984	1135	22	1012	20	1184	8	148	28.3	39.6	849	200	284	184	82

E 20.00.B

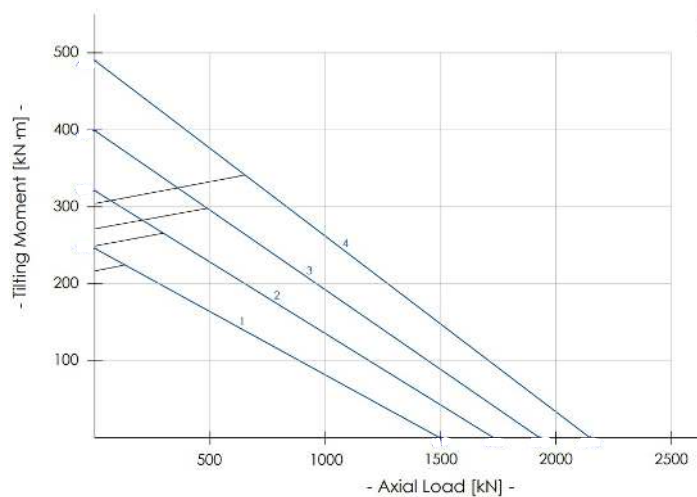
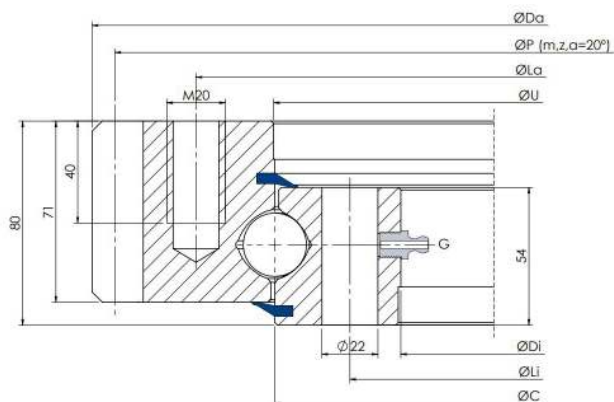
Standard version, ball Ø20mm, external geared, standard holes



Slewing Ring Type		Dimensions				Fixing holes				Gear			Tooth Force		Static		Dynamic		Mass
		Da mm	U mm	C mm	Di mm	La mm	na n°	Li mm	ni n°	P mm	m	z n°	Fz nor. kN	Fz max. kN	Coa (kN)	Mr (kN·m)	Ca (kN)	Cr (kN)	Weight kg
1	E.505.20.00.B	503.3	415.5	412.5	342	455	20	368	24	495	5	99	17.8	24.9	635	58	197	128	31
2	E.650.20.00.B	640.3	545.5	542.5	472	585	28	498	32	630	6	105	21.2	29.7	869	103	218	142	43
3	E.750.20.00.B	742.3	645.5	642.5	572	685	32	598	36	732	6	122	21.2	29.7	1035	145	233	151	52
4	E.850.20.00.B	838.1	745.5	742.5	672	785	36	698	40	828	6	138	21.2	29.7	1186	191	246	160	59
5	E.950.20.00.B	950.1	845.5	842.5	772	885	36	798	40	936	8	117	28.2	39.6	1366	249	258	167	71
6	E.1050.20.00.B	1046.1	945.5	942.5	872	985	40	898	44	1032	8	129	28.2	39.6	1532	312	269	174	77
7	E.1200.20.00.B	1198.1	1095.5	1092.5	1022	1135	44	1048	48	1184	8	148	28.2	39.6	1781	418	284	184	91

E 25.00.B

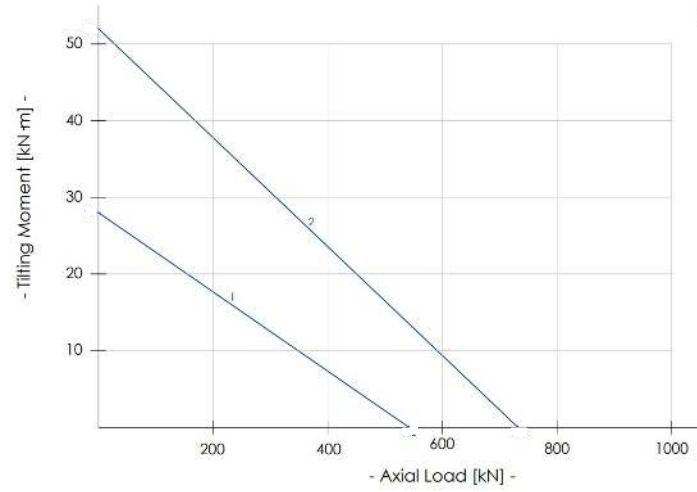
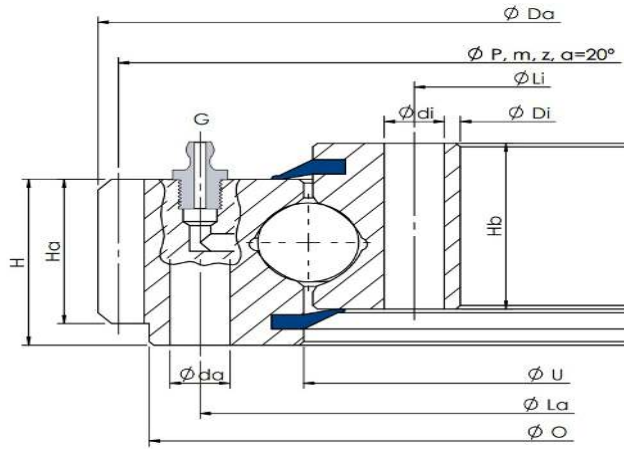
Standard version, ball Ø25mm, external geared, standard holes



Slewing Ring Type	Dimensions				Fixing holes				Gear			Tooth Force		Static		Dynamic		Mass
	Da mm	U +IT8 mm	C mm	Di +IT8 mm	La mm	na n°	Li mm	ni n°	P mm	m	z n°	Fz nor. kN	Fz max. kN	Coa (kN)	Mr (kN·m)	Ca (kN)	Cr (kN)	Weight kg
1 E.900.25.00.B	898	755	754	657	816	24	695	24	882	9	98	50.8	71.1	1497	246	344	223	128
2 E.1000.25.00.B	997	855	854	757	916	28	795	28	981	9	109	50.8	71.1	1730	321	362	235	145
3 E.1100.25.00.B	1096	955	954	857	1016	30	895	30	1080	9	120	50.8	71.1	1930	399	376	244	155
4 E.1200.25.00.B	1198	1055	1054	957	1116	30	995	30	1180	10	118	55.5	77.6	2148	490	392	254	171

E 22.00.D

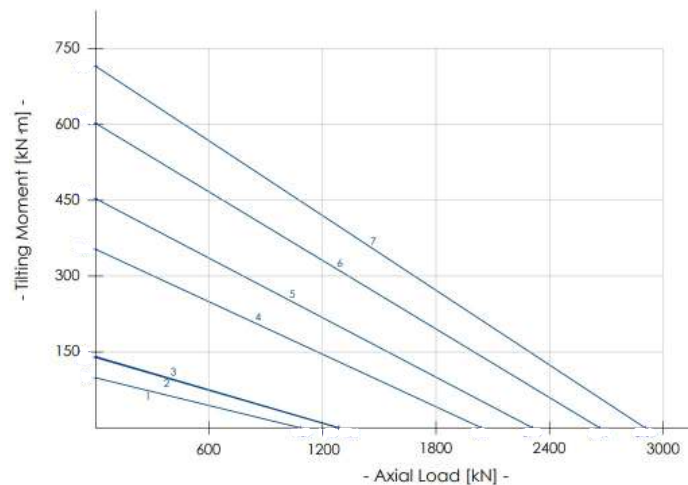
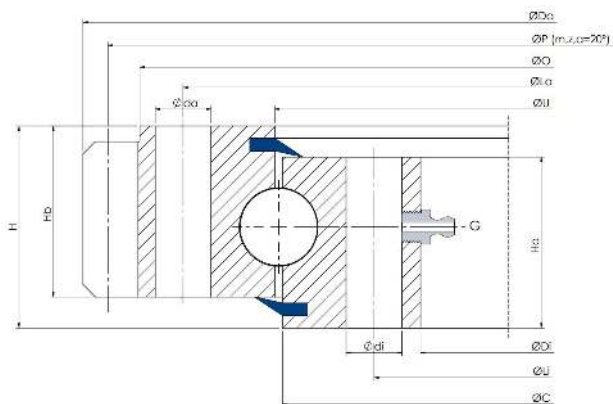
Special version, ball Ø22mm, external geared, special holes



Slewing Ring Type	Dimensions								Fixing holes					Gear			Tooth Force		Mass
	Da mm	O mm	U mm	Di mm	Ha mm	Hb mm	H mm	La mm	na n°	da mm	Li mm	ni n°	di mm	P mm	m	z n°	Fz nor. kN	Fz max. kN	Weight kg
1 E.318.22.00.D.1	318	297	230	162	40	46	56	275	20	13	182	20-1	13	310.5	4.5	69	14.3	20	17
2 E.403.22.00.D.1	403.5	380	310	235	39	47	55	358	24	13	259	28-1	13	396	4.5	88	14.3	20	23

E 25.00.D

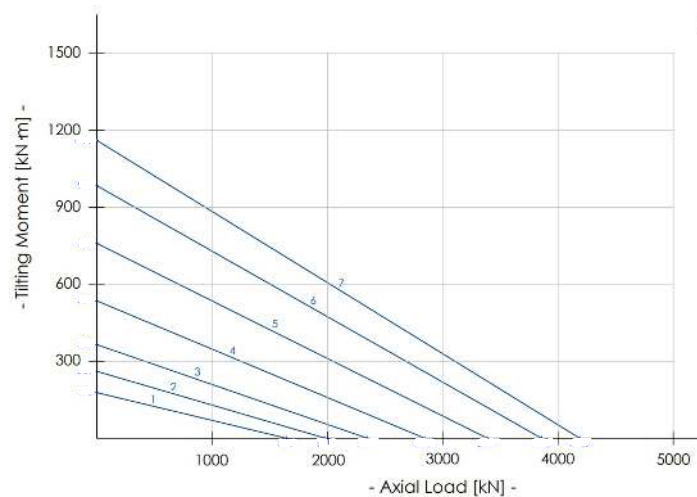
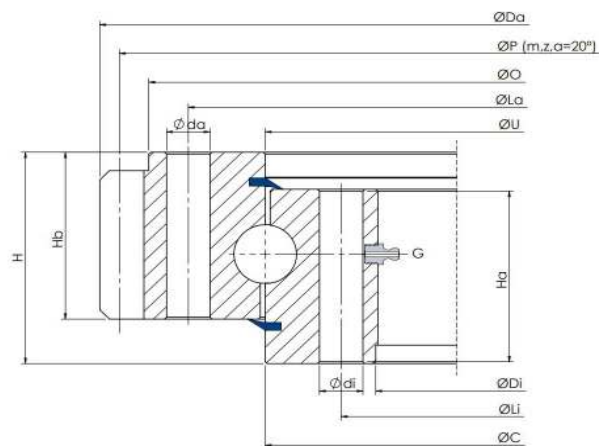
Special version, ball Ø25mm, external geared, special holes



Slewing Ring Type	Dimensions							Fixing holes						Gear			Tooth Force		Mass
	Da mm	O mm	U mm	Di mm	Ha mm	Hb mm	H mm	La mm	na n°	da mm	Li mm	ni n°	di mm	P mm	m	z n°	Fz nor. kN	Fz max. kN	Weight kg
1 E.535.25.00.D.1	535	495	401	306	55	63	75	466	18	20	336	18	20	520	8	65	34.2	47.9	65
2 E.589.25.15.D.1	589.5	565	475	384	40	63	75	540	36	16	410	36-1	16	580.5	4.5	129	14.9	21.4	60
3 E.595.25.00.D.6	595	565	477	382	50	55	65	540	18	17	410	18	17	585	5	117	19.5	27.3	58
4 E.864.25.00.D.5	864	835	771.5	680	57	65	82	800	24	M16	706	24	M16	852	6	142	26.9	37.7	85
5 E.972.25.00.D.3	972	942	854	766	58	60	70	912	36	M16	796	36	18	960	6	160	27.4	38.4	108
6 E.1080.25.00.D.5	1080	1042	987	895	62	64	82	1015	30	M16	922	30	M16	1064	8	133	40.4	56.5	120
7 E.1200.25.00.D.1	1200	1163	1078	982	50	55	65	1135	30	18	1012	30	18	1184	8	148	31.5	44.1	140

E 32.00.D

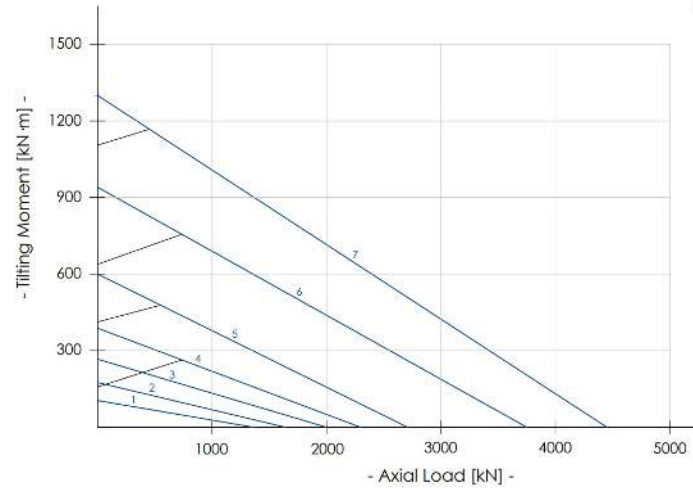
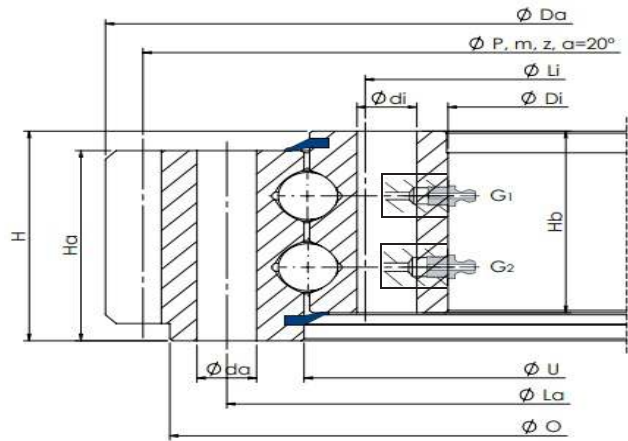
Special version, ball Ø32mm, external geared, special holes



Slewing Ring Type	Dimensions							Fixing holes					Gear			Tooth Force		Mass	
	Da mm	O mm	U mm	Di mm	Ha mm	Hb mm	H mm	La mm	na n°	da mm	Li mm	ni n°	di mm	P mm	m	z n°	Fz nor. kN	Fz max. kN	Weight kg
1 E.595.32.00.D.1	595	565	475	382	65	75	88	540	24	18	410	24-1	18	585	5	117	24.5	35.5	80
2 E.695.32.15.D.1	695	670	574	480	42	64	77	640	36	18	508	36-1	18	685	5	137	18.3	26.1	77
3 E.816.32.00.D.1	816	781	682	574	65	70	90	753	18	22	604	18	22	792	6	132	29.4	41.2	120
4 E.980.32.00.D.1	979	932	845	718	65	82	100	893	36	22	753	36-1	22	940	10	94	52.1	72.9	167
5 E.1144.32.15.D.1	1144	1090	993	870	67	84	100	1050	36	22	910	36-1	22	1110	10	111	60.9	87.2	230
6 E.1289.32.15.D.1	1289.5	1240	1116	985	78	94	114	1198	40	22	1035	40	22	1250	10	125	64.7	92.7	330
7 E.1380.32.15.D.1	1380	1330	1212	1100	80	94	114	1290	36	22	1135	36	22	1360	10	136	67.4	97.2	335

E 2.XX.00.D

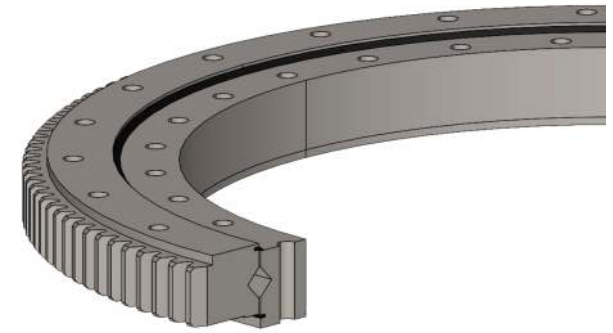
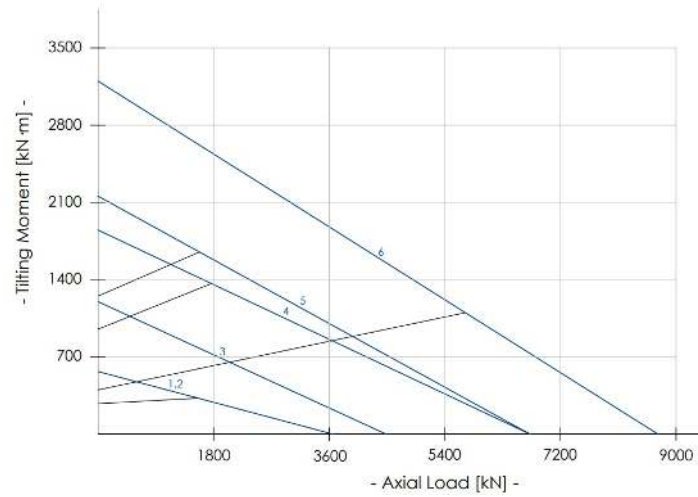
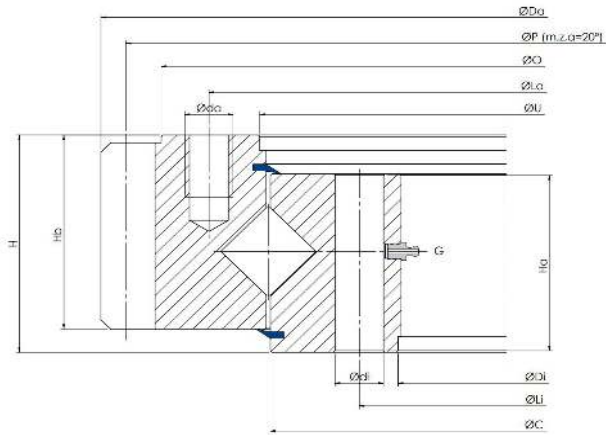
Double row version, double ball different \emptyset in mm, external geared, special holes



Slewing Ring Type	Dimensions							Fixing holes					Gear			Tooth Force		Mass		
	Da mm	O mm	U mm	Di mm	Ha mm	Hb mm	H mm	La mm	na n°	da mm	Li mm	ni n°	di mm	P mm	m	z n°	Fz nor. kN	Fz max. kN	Weight kg	
1	E.504.2.25.00.D.6	504	466	387	300	75	87	95	436	16	17	330	16	17	488	8	61	31	62	65
2	E.608.2.25.10.D.6	608	570	487	382	78	87	95	540	24	17	410	24	17	592	8	74	40	80	84
3	E.712.2.25.12.D.6	712	670	577	470	75	88	98	640	24	17	508	24	20	696	8	87	41	82	103
4	E.1079.2.20.12.D.3-V	1079	972	972	893	70	80	90	1015	30	M16	922	30	18	1048	8	131	42	84	140
5	E.1080.2.22.00.D.6	1080	1042	970	893	76	83	92	1015	30	17	992	30	17	1064	8	133	32	64	150
6	E.1200.2.25.00.D.1	1200	1163	1079	976	77	88	98	1135	36	19	1012	36	19	1184	8	148	32	64	210

E XX.00.D-RV

Cross row version, different rollers \emptyset in mm, external geared, special holes



Slewing Ring Type	Dimensions							Fixing holes					Gear			Tooth Force		Mass	
	Da mm	O mm	U mm	Di mm	Ha mm	Hb mm	H mm	La mm	na n°	da mm	Li mm	ni n°	di mm	P mm	m	z n°	Fz nor. kN	Fz max. kN	Weight kg
1 E.1144.30.12.D.1-RV	1144	1090	993	870	84	67	100	1050	18	22	910	SC*	22	1110	10	111	58	116	230
2 E.1144.30.12.D.3-RV	1144	1090	993	870	84	67	100	1050	SC*	22	910	SC*	22	1122	11	102	60	120	230
3 E.1390.30.15.D.1-R	1390	1237	1237	1115	89	85	105	1290	30	M20	1150	30	22	1368	12	114	82	164	329
4 E.1476.45.15.D.1-RV	1476	1415	1252.5	1085	100	77	110	1350	24	26	1150	28	26	1440	10	144	68	136	475
5 E.1604.50.10.D.1-RV	1604	1550	1394	1208	116	75	128	1500	24	29	1280	SC*	29	1570	10	157	55	110	606
6 E.1805.45.17.D.3-R	1805	1730	1608	1437	120	115	140	1671	60	M27	1485	60	30	1744	16	109	167	334	750

SC* = Drilling not equi-spaced