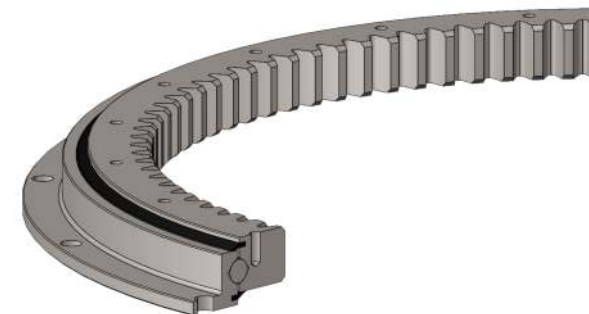
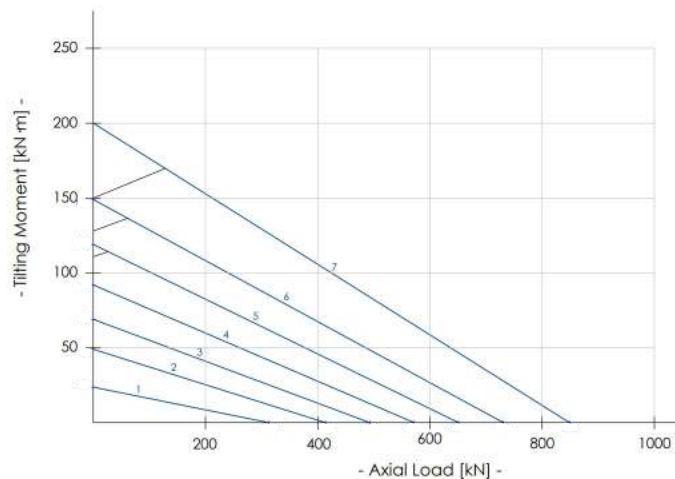
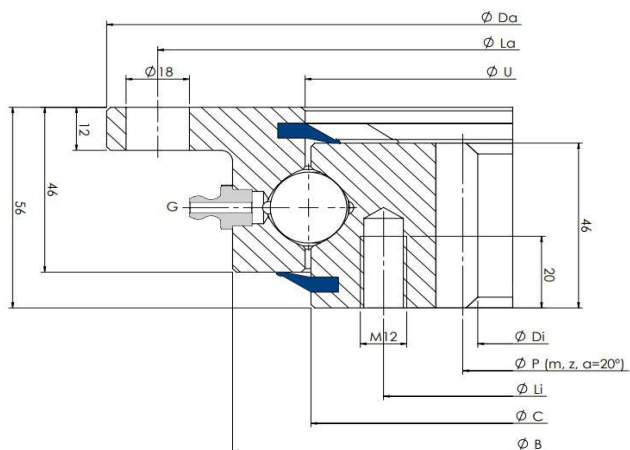


---

# MODEL INTERNAL GEAR

# I 20.00.C

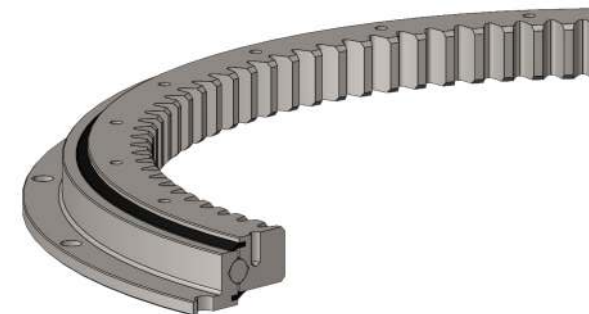
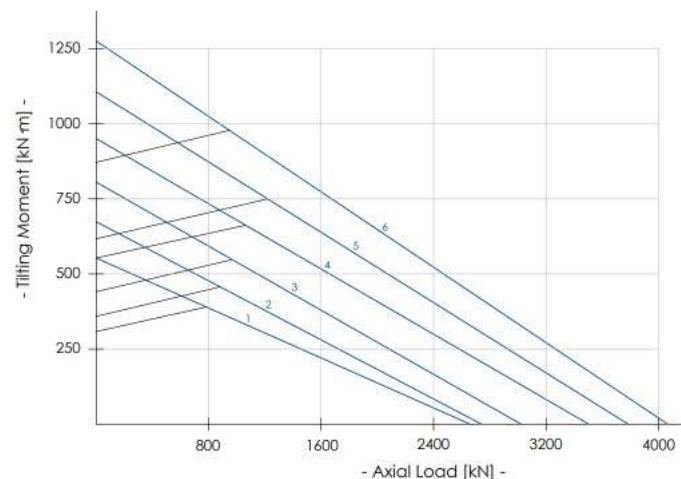
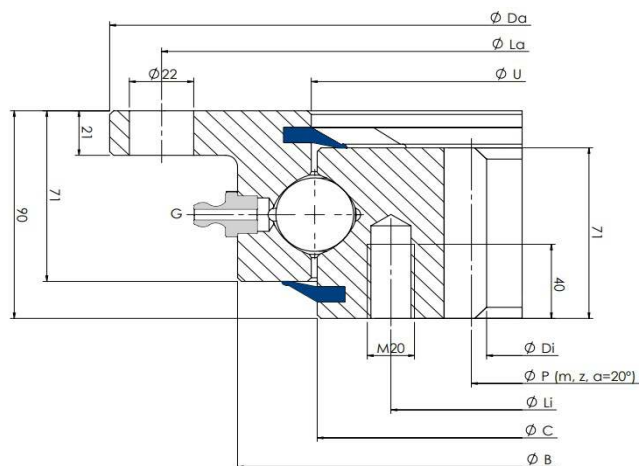
Light version, ball Ø20mm, internal geared, standard holes



Slewing Ring Type	Dimensions					Fixing holes				Gear			Tooth Force		Static		Dynamic		Mass
	Da mm	B mm	U mm	C mm	Di mm	La mm	na n°	Li mm	ni n°	P mm	m	z n°	Fz nor. kN	Fz max. kN	Coa (kN)	Mr (kN·m)	Ca (kN)	Cr (kN)	Weight kg
1 I.505.20.00.C	518	453	415.5	412.5	326.5	490	8	375	12	335	5	67	17.7	24.7	313	29	197	128	27
2 I.650.20.00.C	648	583	545.5	542.5	445.2	620	10	505	16	456	6	76	21.4	30	414	49	218	142	37.5
3 I.750.20.00.C	748	683	645.5	642.5	547.2	720	12	605	18	558	6	93	21.4	30	493	69	233	151	44.5
4 I.850.20.00.C	848	783	745.5	742.5	649.2	820	12	705	20	660	6	110	21.4	30	572	92	246	160	51
5 I.950.20.00.C	948	883	845.5	842.5	737.6	920	14	805	20	752	8	94	28.5	39.9	651	119	258	167	61
6 I.1050.20.00.C	1048	983	945.5	942.5	841.6	1020	16	905	22	856	8	107	28.5	39.9	731	149	269	174	65
7 I.1200.20.00.C	1198	1133	1095.5	1092.5	985.6	1170	16	1055	24	1000	8	125	28.5	39.9	849	200	284	184	80

# I 32.00.C

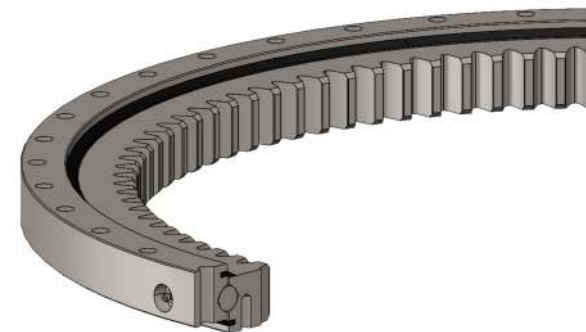
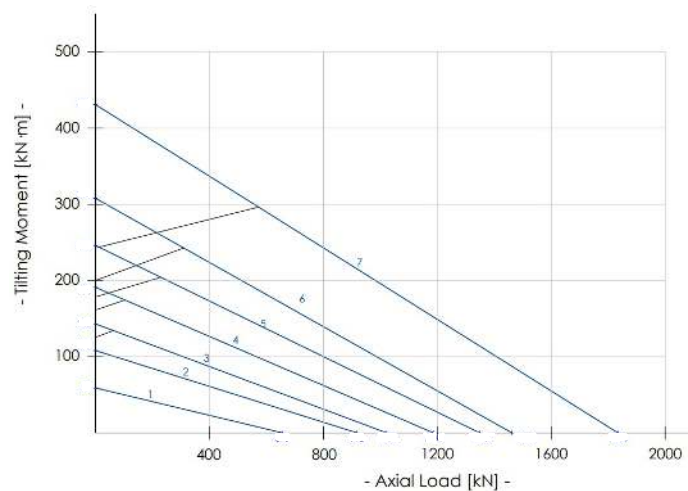
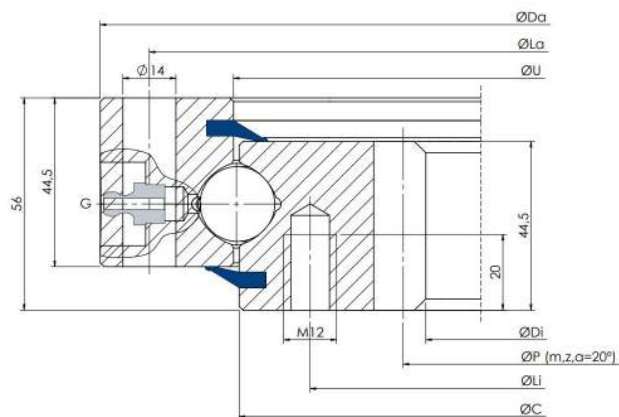
Light version, ball Ø32mm, internal geared, standard holes



Slewing Ring Type	Dimensions					Fixing holes				Gear			Tooth Force		Static		Dynamic		Mass	
	Da mm	B mm	U mm	C mm	Di mm	La mm	na n°	Li mm	ni n°	P mm	m	z n°	Fz nor. kN	Fz max. kN	Coa (kN)	Mr (kN-m)	Ca (kN)	Cr (kN)	Weight kg	
<b>1</b>	<b>I.1100.32.00.C</b>	1100	1017	955	955	810	1060	30	894	30	830	10	83	56.8	84.2	2660	553	538	349	159
<b>2</b>	<b>I.1200.32.00.C</b>	1200	1117	1055	1055	910	1160	30	994	30	930	10	93	56.8	84.2	2941	674	557	362	176
<b>3</b>	<b>I.1300.32.00.C</b>	1300	1217	1155	1155	1010	1260	36	1094	36	1030	10	103	56.8	84.2	3222	806	576	374	192
<b>4</b>	<b>I.1400.32.00.C</b>	1400	1317	1255	1255	1110	1360	42	1194	42	1130	10	113	56.8	84.2	3503	951	593	385	208
<b>5</b>	<b>I.1500.32.00.C</b>	1500	1417	1355	1355	1210	1460	42	1294	42	1230	10	123	56.8	84.2	3784	1107	610	396	226
<b>6</b>	<b>I.1600.32.00.C</b>	1600	1517	1455	1455	1310	1560	48	1394	48	1330	10	133	56.8	84.2	4065	1276	626	406	243

# I 20.00.B

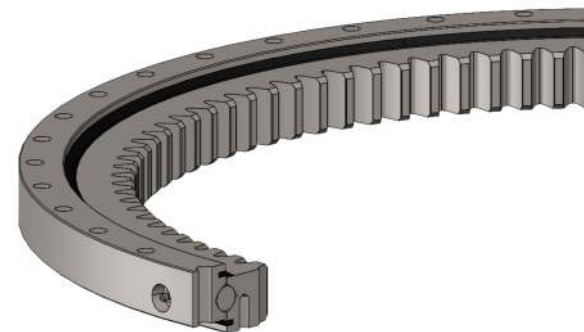
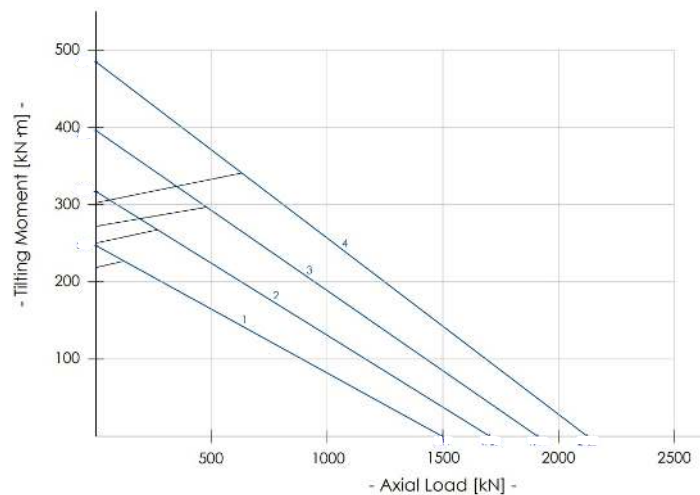
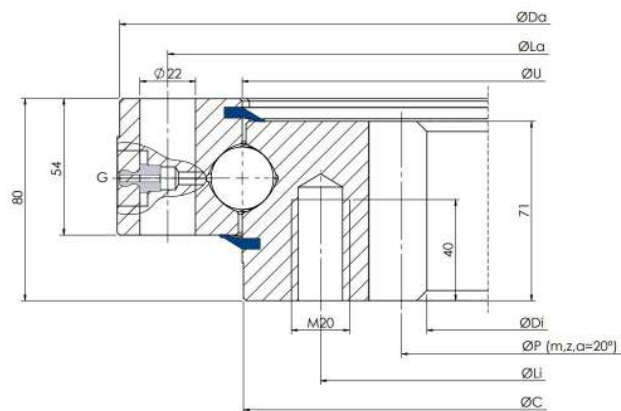
Standard version, ball Ø20mm, internal geared, standard holes



Slewing Ring Type	Dimensions				Fixing holes				Gear			Tooth Force		Static		Dynamic		Mass
	Da mm	U mm	C mm	Di mm	La mm	na n°	Li mm	ni n°	P mm	m	z n°	Fz nor. kN	Fz max. kN	Coa (kN)	Mr (kN-m)	Ca (kN)	Cr (kN)	Weight kg
1 I.486.20.00.B	486	415.5	412.5	325	460	24	375	24	335	5	67	17.7	24.7	656	59	197	128	31
2 I.616.20.00.B	616	545.5	542.5	444	590	32	505	32	456	6	76	21.4	30	918	108	218	142	42
3 I.716.20.00.B	716	645.5	642.5	546	690	36	605	36	558	6	93	21.4	30	1022	143	233	151	50
4 I.816.20.00.B	816	745.5	742.5	648	790	40	705	40	660	6	110	21.4	30	1186	191	246	160	58
5 I.916.20.00.B	916	845.5	842.5	736	890	40	805	40	752	8	94	28.5	39.9	1349	246	258	167	69
6 I.1016.20.00.B	1016	945.5	942.5	840	990	44	905	44	856	8	107	28.5	39.9	1513	308	269	174	76
7 I.1166.20.00.B	1166	1095.5	1092.5	984	1140	48	1055	48	1000	8	125	28.5	39.9	1834	431	284	184	91

# I 25.00.B

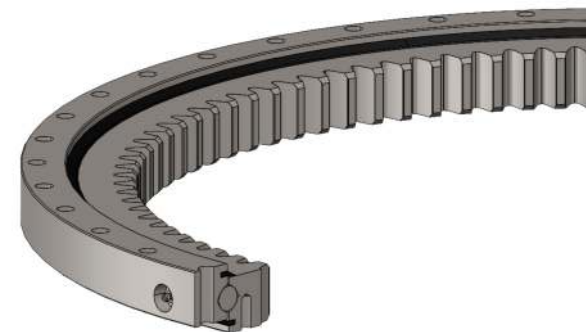
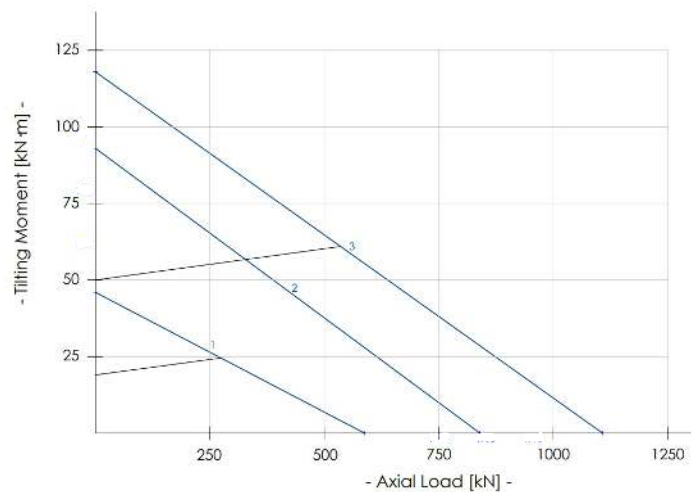
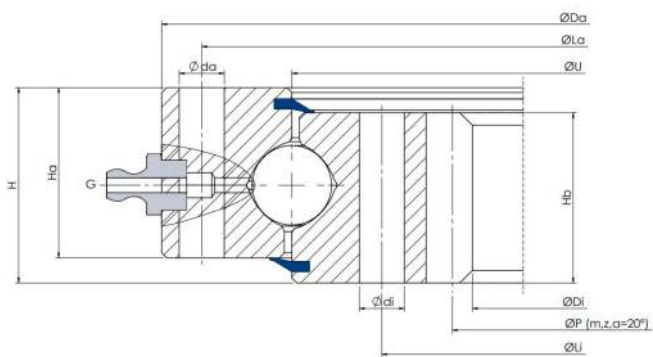
Standard version, ball Ø25mm, internal geared, standard holes



Slewing Ring Type	Dimensions				Fixing holes				Gear			Tooth Force		Static		Dynamic		Mass	
	Da -IT8 mm	U mm	C -IT8 mm	Di mm	La mm	na n°	Li mm	ni n°	P mm	m	z n°	Fz nor. kN	Fz max. kN	Coa (kN)	Mr (kN·m)	Ca (kN)	Cr (kN)	Weight kg	
<b>1</b>	<b>I.855.25.00.B</b>	853	756	755	610	815	24	694	24	630	10	63	55.5	77.7	1497	247	344	223	119
<b>2</b>	<b>I.955.25.00.B</b>	953	856	855	710	915	28	794	28	730	10	73	55.5	77.7	1703	317	362	235	137
<b>3</b>	<b>I.1055.25.00.B</b>	1053	956	955	810	1015	30	894	30	830	10	83	55.5	77.7	1910	396	376	244	149
<b>4</b>	<b>I.1155.25.00.B</b>	1153	1056	1055	910	1115	30	994	30	930	10	93	55.5	77.7	2125	485	391	254	165

# I XX.00.D

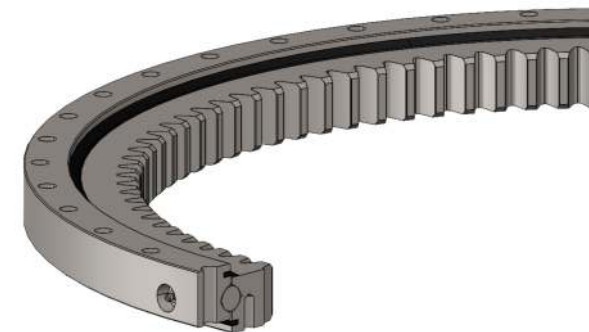
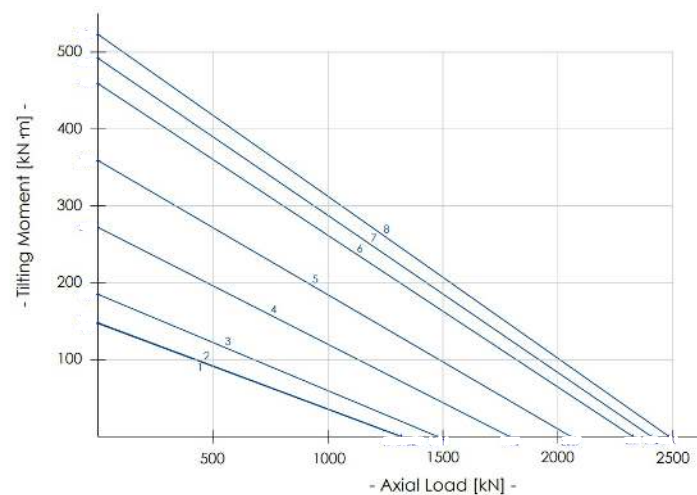
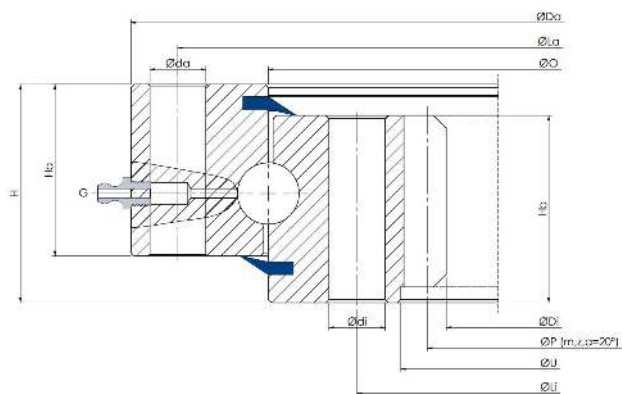
Special version, different ball  $\emptyset$  in mm, internal geared, special holes



Slewing Ring Type	Dimensions							Fixing holes					Gear			Tooth Force		Mass	
	Da mm	O mm	U mm	Di mm	Ha mm	Hb mm	H mm	La mm	na n°	da mm	Li mm	ni n°	di mm	P mm	m	z n°	Fz nor. kN	Fz max. kN	Weight kg
1 I.340.16.00.D.1	340	288	288	216	34	34	39	324	20	9	252	20	9	224	4	56	10.7	14.9	12
2 I.486.16.00.D.1	486	421.5	421.5	332	34	34	39	462	16	14	378	16	14	340	4	85	10.7	14.9	24
3 I.535.22.00.D.3.V	535	466.5	400	380	40	40	50	510	16	13	420	16	M12	384	4	96	11	22	32

# I 25.00.D

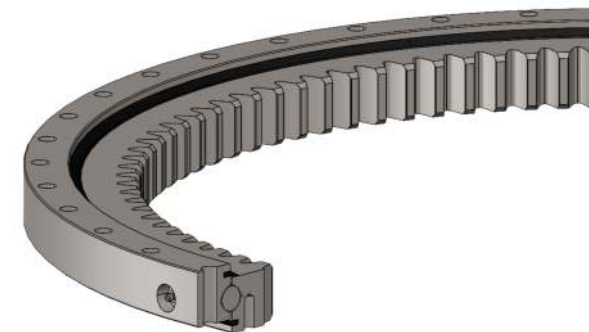
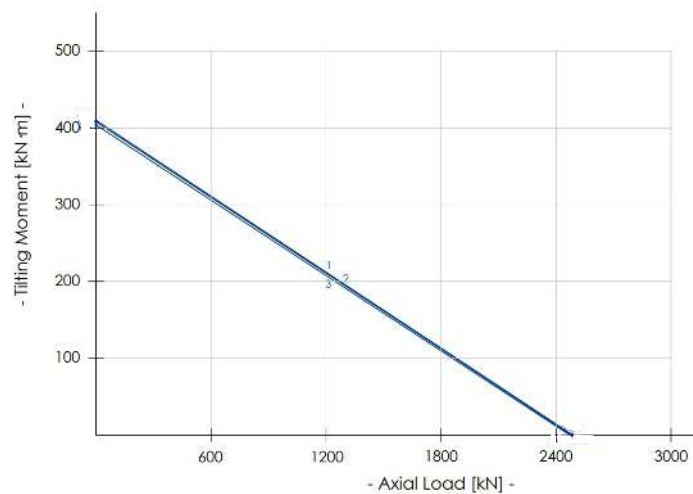
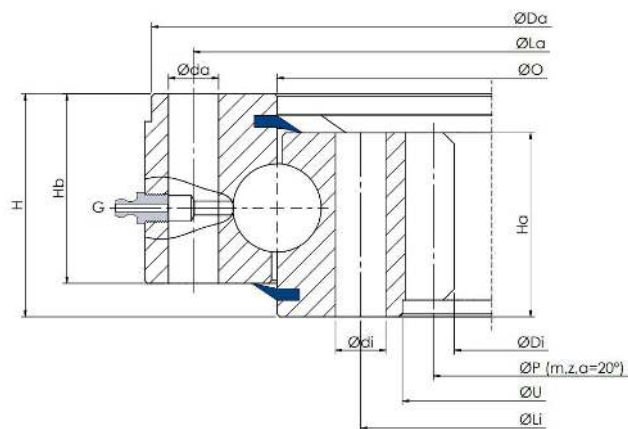
Special version, ball Ø25mm, internal geared, special holes



Slewing Ring Type	Dimensions								Fixing holes					Gear			Tooth Force		Mass
	Da mm	O mm	U mm	Di mm	Ha mm	Hb mm	H mm	La mm	na n°	da mm	Li mm	ni n°	di mm	P mm	m	z n°	Fz nor. kN	Fz max. kN	Weight kg
1 I.562.25.15.D.1	560	489	418	385	43	50	60	538	30	14	440	30	14	396	6	66	25.5	36.5	41
2 I.570.25.00.D.1	570	488	410	378	55	55	70	540	18	18	436	18	18	390	6	65	25.7	35.9	54
3 I.635.25.00.D.3.V	635	547	467	439.5	50	50	60	605	24	15	490	16	M16	444	6	74	30.9	46	57
4 I.750.25.00.D.1	750	663	575	546	55	55	70	720	20	18	605	20	18	558	6	93	26.4	37	76
5 I.850.25.00.D.1	850	762	677	648	55	55	70	820	24	18	705	24	18	660	6	110	24.9	36	91
6 I.950.25.00.D.1	950	862	775	736	55	55	70	920	30	18	805	30	18	752	8	94	33.3	46.6	108
7 I.980.25.00.D.3	975	892	892	784	72	66	84	944	36	18	850	36	M16	800	8	100	43	62	135
8 I.1015.25.15.D.1	1015	920	824	784	67	66	82	980	40	18	860	40	18	800	8	100	43	62	143

# I 32.00.D

Special version, ball Ø32mm, internal geared, special holes

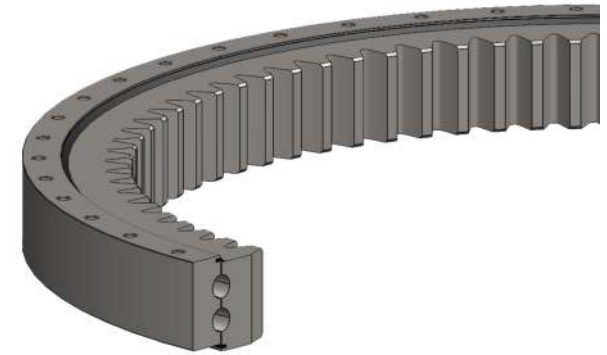
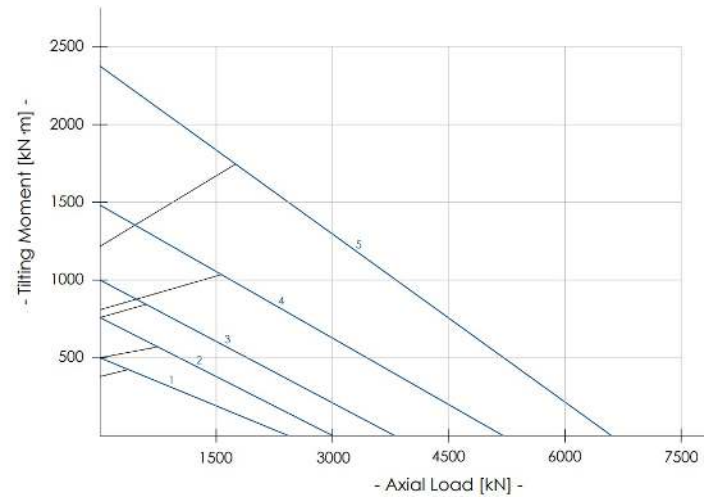
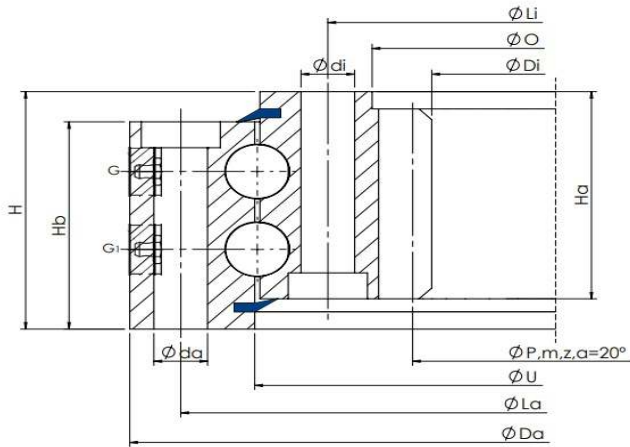


Slewing Ring Type	Dimensions							Fixing holes					Gear			Tooth Force		Mass	
	Da mm	O mm	U mm	Di mm	Ha mm	Hb mm	H mm	La mm	na n°	da mm	Li mm	ni n°	di mm	P mm	m	z n°	Fz nor. kN	Fz max. kN	Weight kg
1 I.810.32.00.D.1	805	718	630	601	60	68	80	780	20	18	660	20	18	612	6	102	28.2	40.3	110
2 I.815.32.10.D.1	810	720	630	593	60	68	80	780	30	18	660	30	18	608	8	76	37.9	53.1	110
3 I.816.32.00.D.1	815	715	605	568.9	67	75	90	785	18	17	640	18	17	574	7	82	37	51.8	143



# E 2.XX.00.D

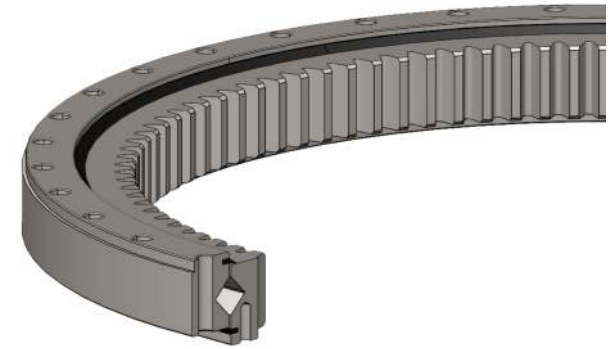
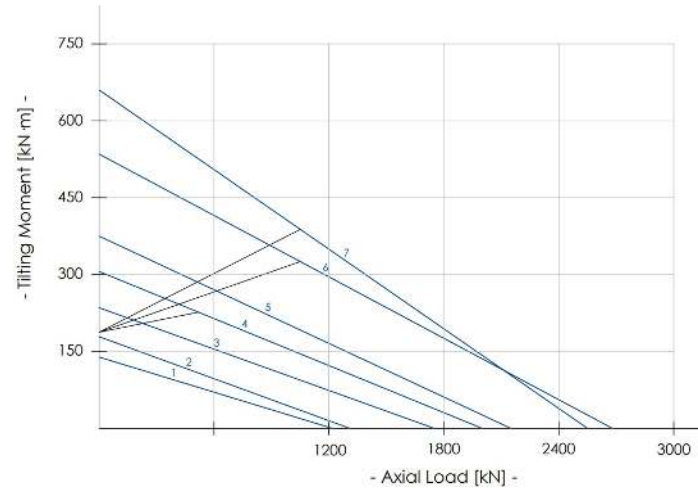
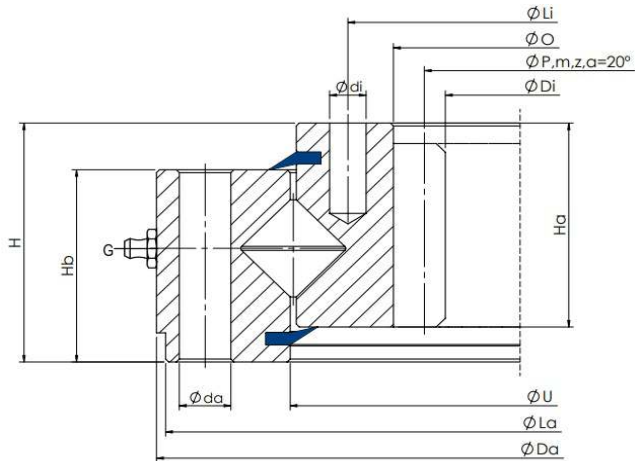
Double row version, double ball different  $\emptyset$  in mm, internal geared, special holes



Slewing Ring Type	Dimensions							Fixing holes					Gear			Tooth Force		Mass	
	Da mm	O mm	U mm	Di mm	Ha mm	Hb mm	H mm	La mm	na n°	da mm	Li mm	ni n°	di mm	P mm	m	z n°	Fz nor. kN	Fz max. kN	Weight kg
<b>1</b> I.973.2.22.00.D.6	973	899	820	786	80	88	97	944	36	17	850	36	17	800	8	100	36.2	72.4	141
<b>2</b> I.1165.2.22.00.D.6	1165	1089	1010	962	83	88	98	1134	36	17	1040	36	17	980	10	98	45	90	187
<b>3</b> I.1200.2.25.00.D.6	1200	1102	1010	963.5	88	96	110	1160	36	21	1040	36	21	980	10	98	69	99	230
<b>4</b> I.1346.2.30.05.D.6	1345	1225	1115	1061.6	88	98	108	1290	48	21	1150	48	21	1080	10	108	68.9	137.8	326
<b>5</b> I.1750.2.30.20.D.6	1750	1617	1470	1418	98	110	120	1705	48	25	1525	48	25	1440	12	120	94	140	564

# E XX.00.D-RV

Cross row version, different rollers  $\emptyset$  in mm, internal geared, special holes



Slewing Ring Type		Dimensions							Fixing holes					Gear			Tooth Force		Mass	
		Da mm	O mm	U mm	Di mm	Ha mm	Hb mm	H mm	La mm	na n°	da mm	Li mm	ni n°	di mm	P mm	m	z n°	Fz nor. kN	Fz max. kN	Weight kg
1	<b>I.1165.25.12.D.3-RV</b>	1165	1077.5	1010	961	62	75	90	1134	36	18	1040	36	M16	980	10	98	40	80	155
2	<b>I.1251.30.12.D.1-RV</b>	1250	1142	1142	979	75	75	91	1212	40	22	1068	36	22	990	10	99	58	116	240
3	<b>I.1346.30.15.D.1-RV</b>	1345	1222	1115	1067	75	85	105	1290	36	22	1150	42	22	1080	10	108	58	116	300
4	<b>I.1460.30.12.D.1-RV</b>	1460	1350	1230	1173	80	84	102	1425	36	22	1270	36	22	1176	12	98	74	148	365
5	<b>I.1530.40.12.D.1-RV</b>	1530	1410	1240	1186	90	107	130	1480	36	26	1290	36	26	1200	10	120	70	140	560
6	<b>I.1770.50.17.D.1-RV</b>	1760	1608	1440	1375	110	125	150	1710	48	31	1500	48	31	1400	14	100	120	240	845
7	<b>I.2025.50.15.D.1-RV</b>	2025	1863	1695	1619	115	118	140	1970	36	30	1780	36	30	1616	16	101	135	270	960